

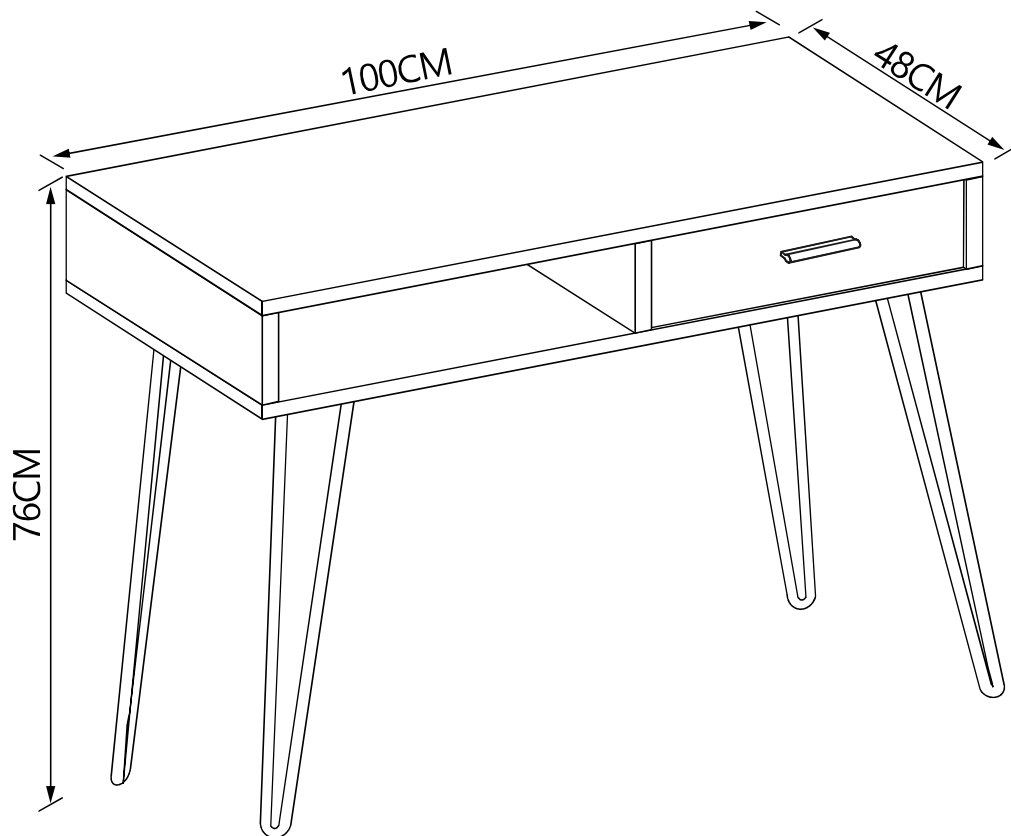


ASSEMBLY INSTRUCTION

LAYTON OFFICE DESK NATURAL/ WHITE

ITEM CODE : 61357

Imported by Amart Furniture Pty Ltd, Qld, Brisbane Australia. For any assistance with assembly or for missing parts please phone Amart Furniture , Customer Service Free call 1800 351 084

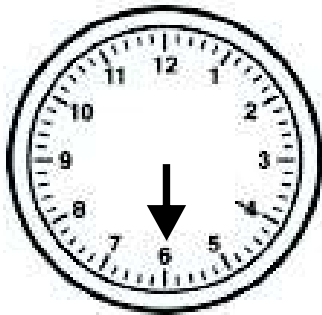


Imported by Amart Furniture Pty Ltd, Brisbane QLD Australia. For any assistance with assembly or for missing parts please phone Amart Furniture, Customer Service Free call 1800 351 084

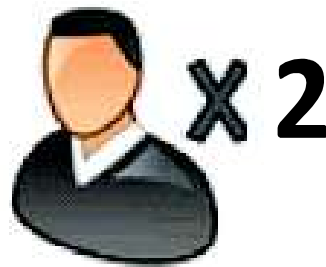
PRE-ASSEMBLY PREPARATION

BEFORE YOU START:

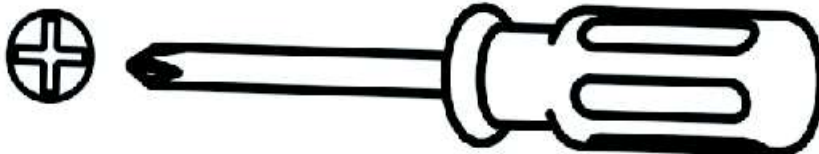
1. Choose a clean, level, spacious assembly area. Avoid hard surfaces that may damage the product
2. Take care when lifting. Product should be assembled as near as possible to the point of use
3. Ensure that you have all required contents for complete assembly
4. Always read the assembly instructions carefully before beginning assembly.
5. Keep all hardware parts and packaging out of reach of small children.
6. Do not over tighten the screws and bolts as this may damage the threads



ALLOW 30 MINUTES

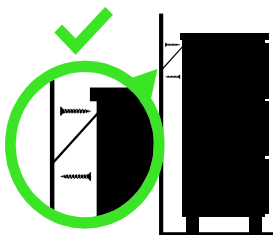


PEOPLE REQUIRED



ADDITIONAL TOOLS REQUIRED

WARNING



Children have died from furniture tipover.

- ALWAYS secure it with an anchor device.
- NEVER allow children to stand, climb or hang on drawers, doors, or shelves.
- NEVER open more than one drawer at a time.
- Place heavy items down low

NEVER put a TV on this furniture

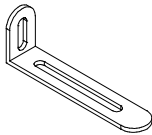


**This is a permanent label.
Do not remove!**

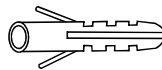
SAFETY BRACKETS INSTRUCTIONS

1. Attach one Mounting Plate to the wall with the Large Screws. Make sure to attach the Mounting Plate into a stud. If mounting into brick or masonry you will need to acquire wall anchors.
2. Attach the second Mounting Plate to the furniture frame with the Short Screws.
3. Move the furniture to its final position. Thread a Wall Strap through the both Mounting Plates and tighten until snug. Do not over tighten.
4. Make sure that the Mounting Plates are firmly attached to the wall and furniture and that the Wall Strap is snug.

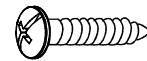
HARDWARE



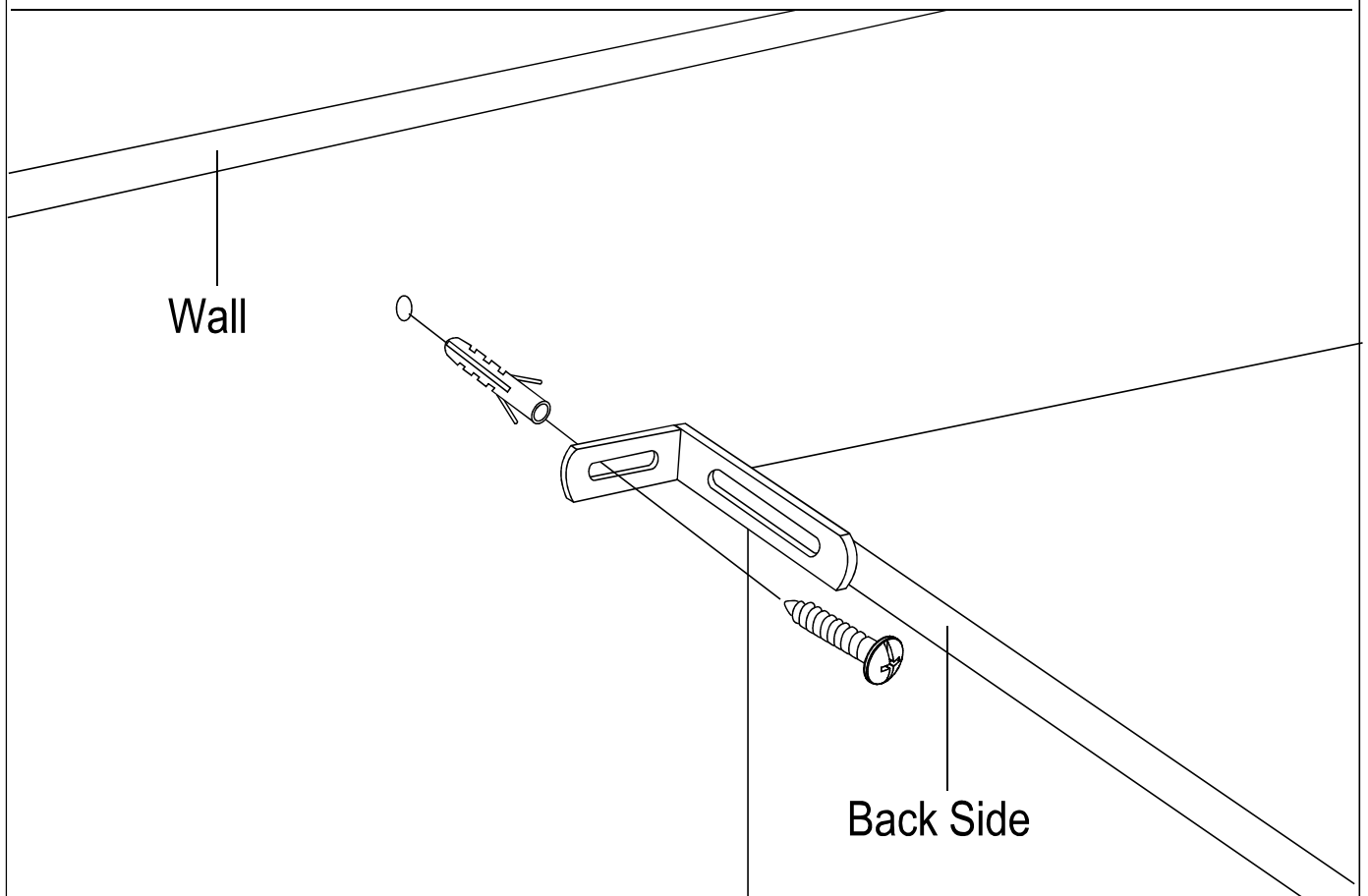
Metal x 2



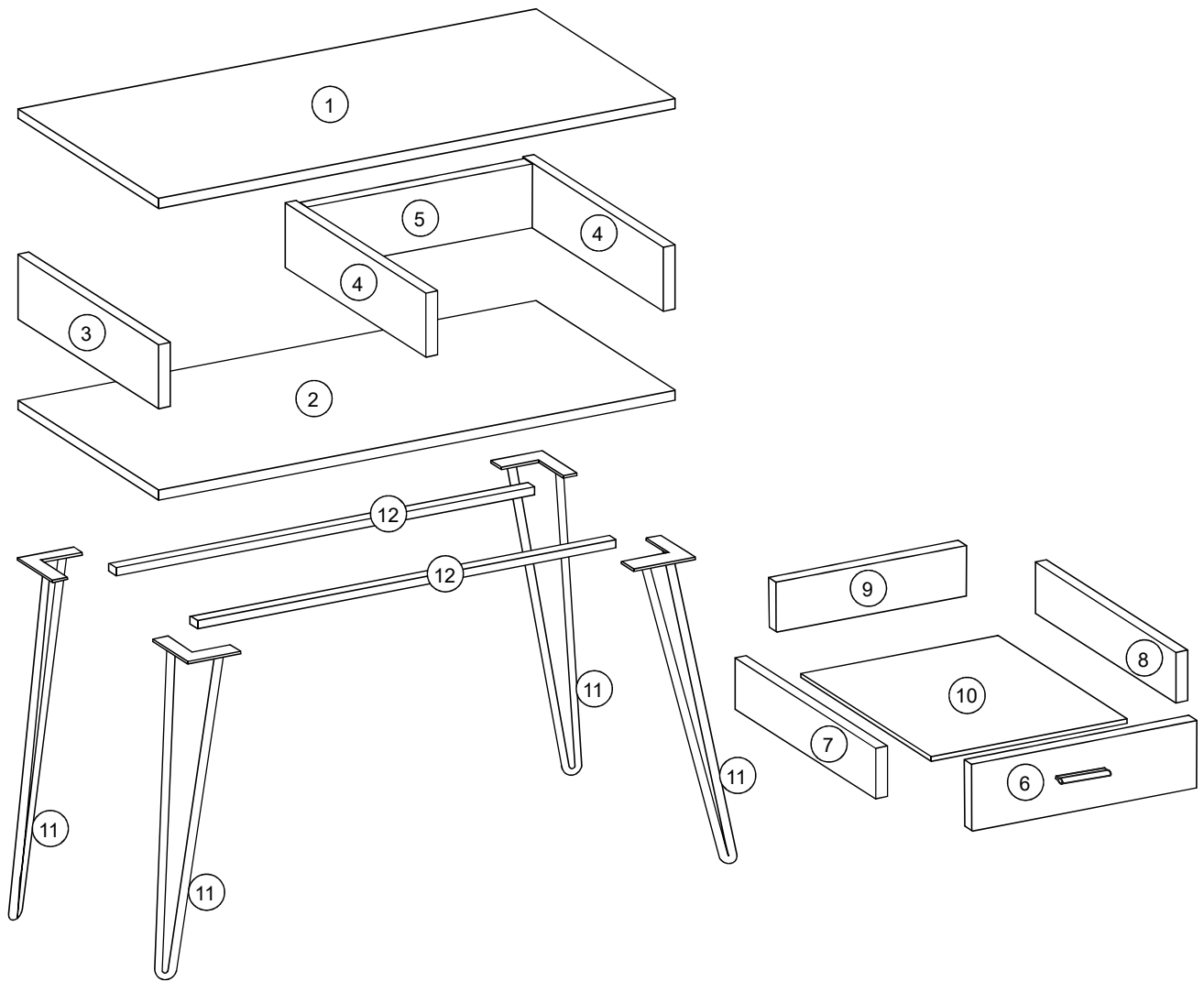
Wall Nut x 2



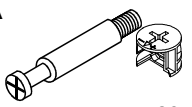
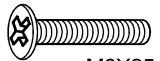



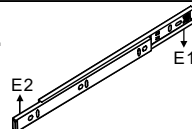

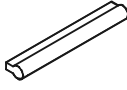

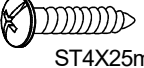
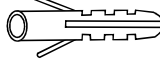
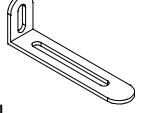

Screw x 2



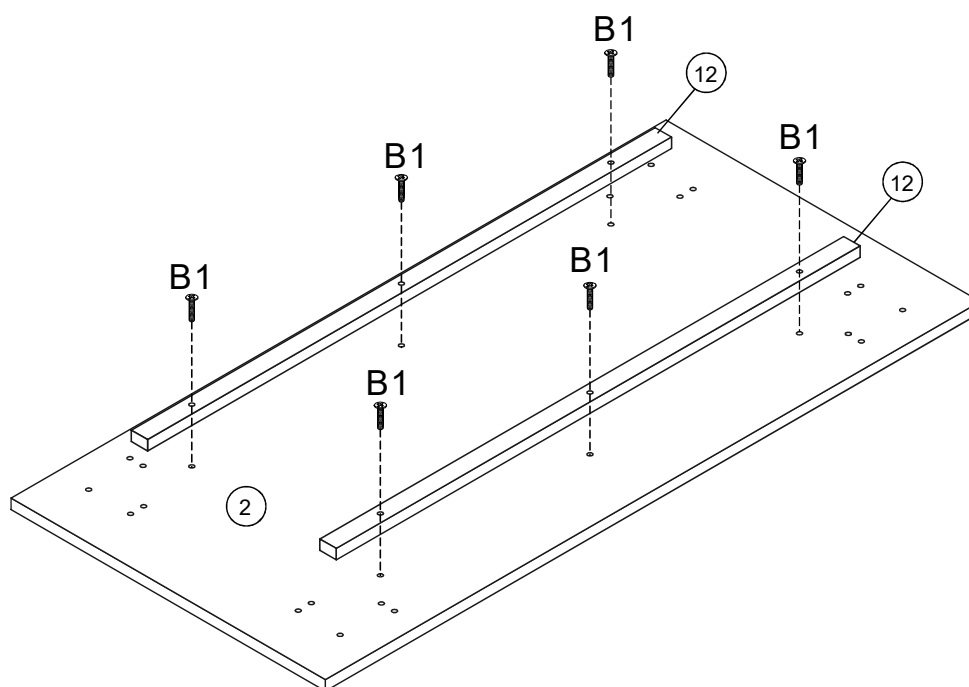
PARTS LIST



1	Top Panel	5	Back Panel	9	Drawer Back Panel
2	Bottom Panel	6	Front Drawer Panel	10	Bottom Drawer Panel
3	Left Side Panel	7	Drawer Left Panel	11	Metal Frame
4	Side Panel	8	Drawer Right Panel	12	Metal Tube

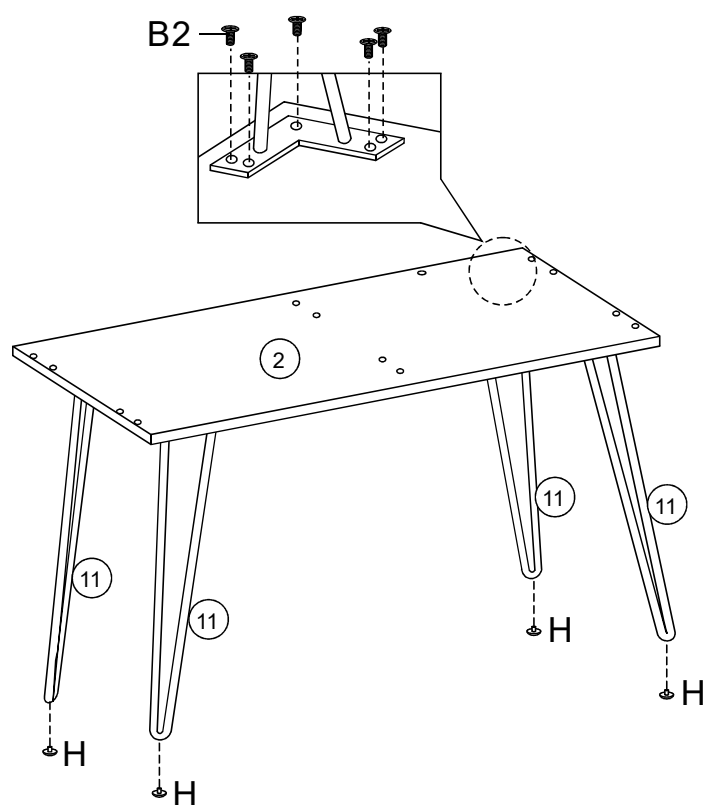
A  Bolt 26pcs	B1  Bolt M6X25mm 6pcs	B2  Bolt M6X12mm 20pcs	C  Screw ST3.5X14mm 16pcs	D  Bolt M4X18mm 2pcs
E  Drawer slideway 2pcs	F  Wood Dowe 8X30mm 12pcs	G  Handle 1pc	H  Plastic Tack 4pcs	I  Screw ST4X25mm 2pcs
J  Wall Nut 2pcs	K  Metal 2pcs	L  26pcs		

STEP 1



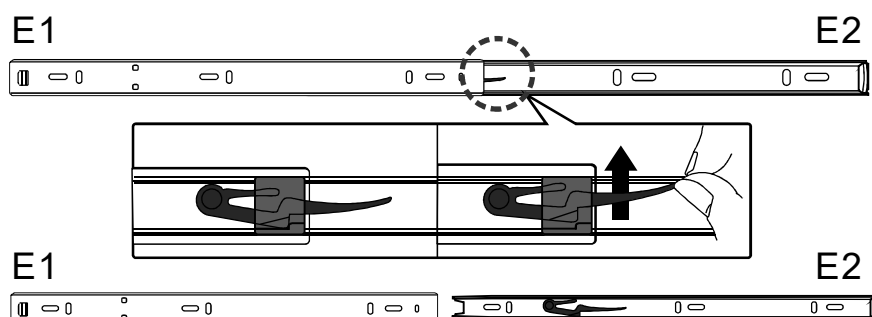
Assemble metal tube (12) to bottom panel (2) using bolt (B1).

STEP 2



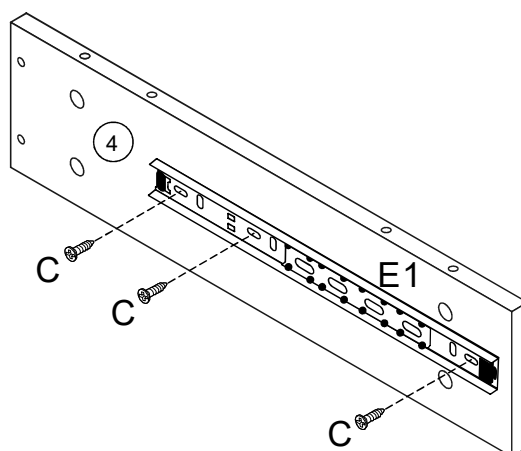
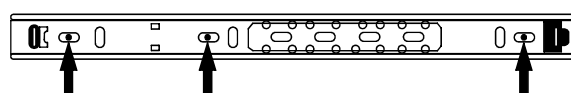
Assemble metal frame (11) to bottom panel (2) using bolt (B2), then insert plastic tack (H) to metal frame (11) .

STEP 3



Raise the plastic tab on the runners and separate (E1) from (E2).

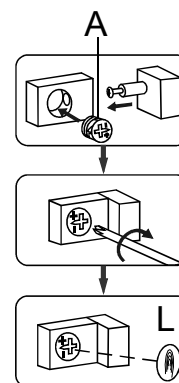
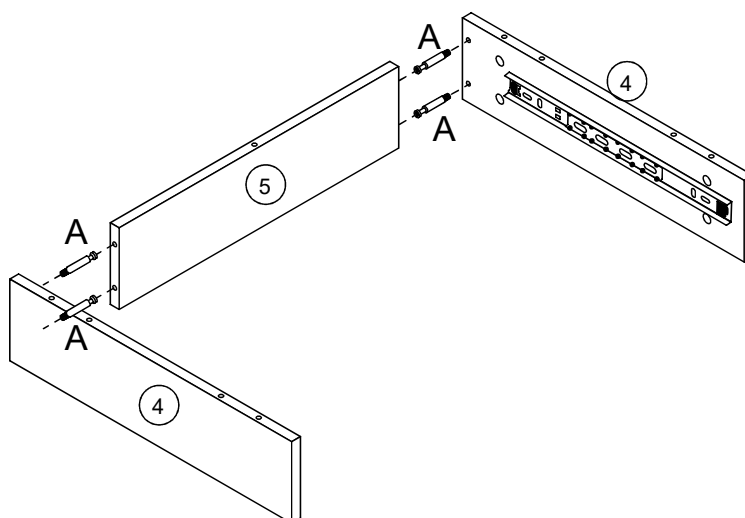
STEP 4



x2

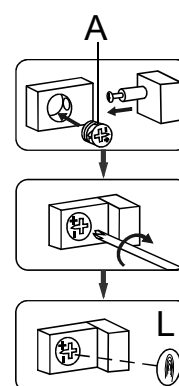
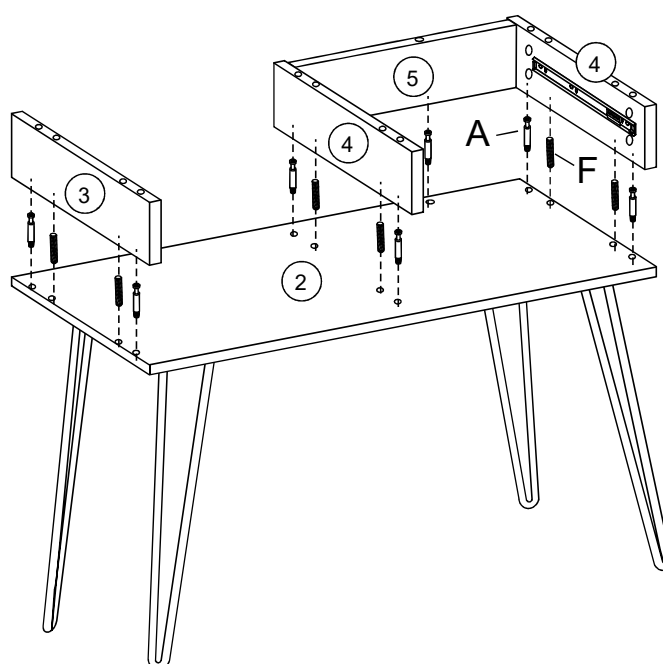
Assemble drawer runner (E1) to side panel (4) using screw (C).

STEP 5



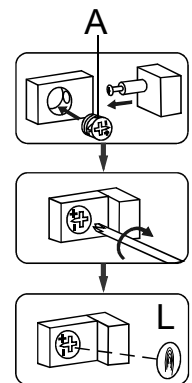
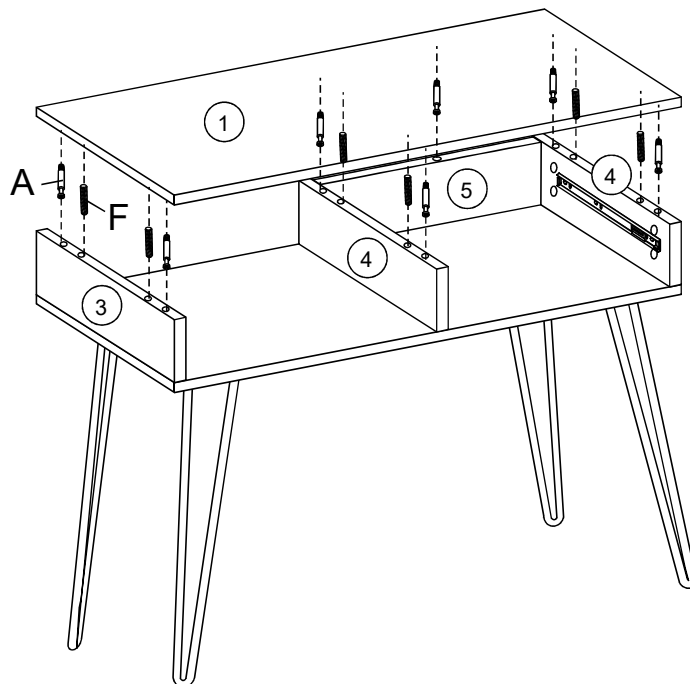
Assemble back panel (5) to side panel (4) using bolt (A).
Place sticker (L) to cover assembled bolt (A).

STEP 6



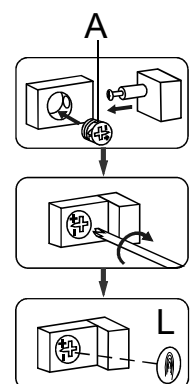
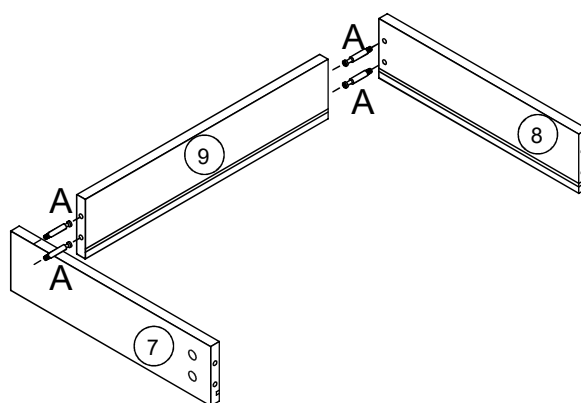
Assemble back panel (5), left side panel (3), side panel (4) to bottom panel (2) using bolt (A) and wood dowel (F). Place sticker (L) to cover assembled bolt (A).

STEP 7



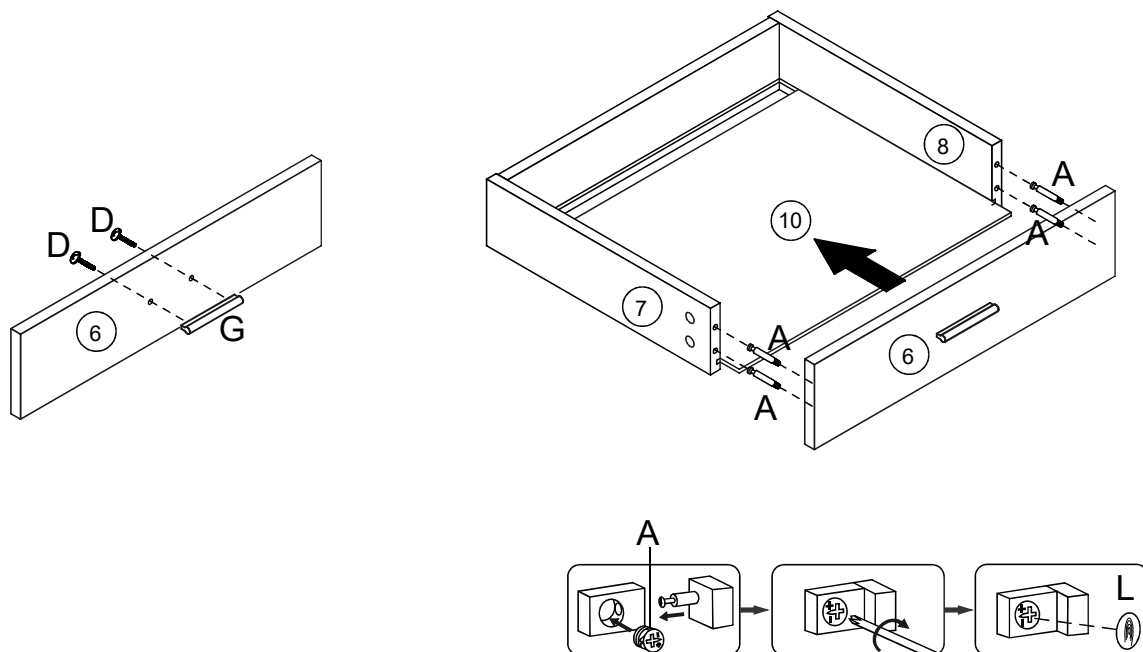
Assemble back panel (5),left side panel (3),side panel (4) to top panel (1) using bolt (A) and wood dowel (F).Place sticker (L) to cover assembled bolt (A).

STEP 8



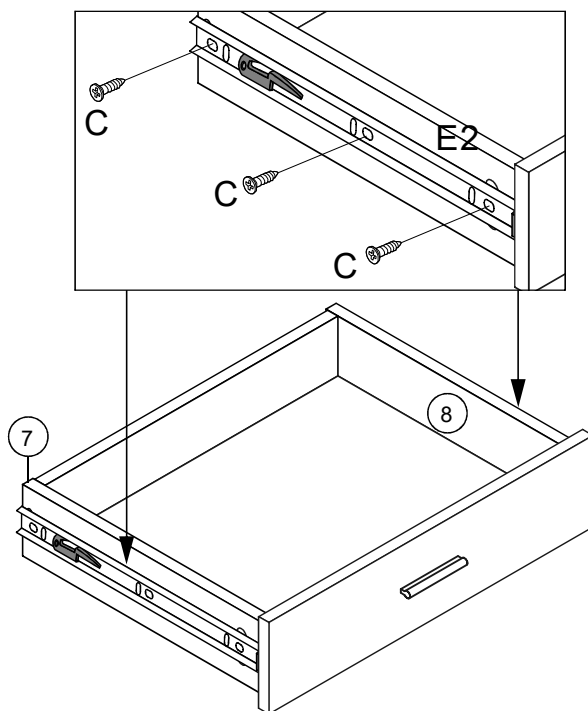
Assemble drawer back panel (9) to drawer left panel (7) and drawer right panel (8) using bolt (A). Place sticker (L) to cover assembled bolt (A).

STEP 9



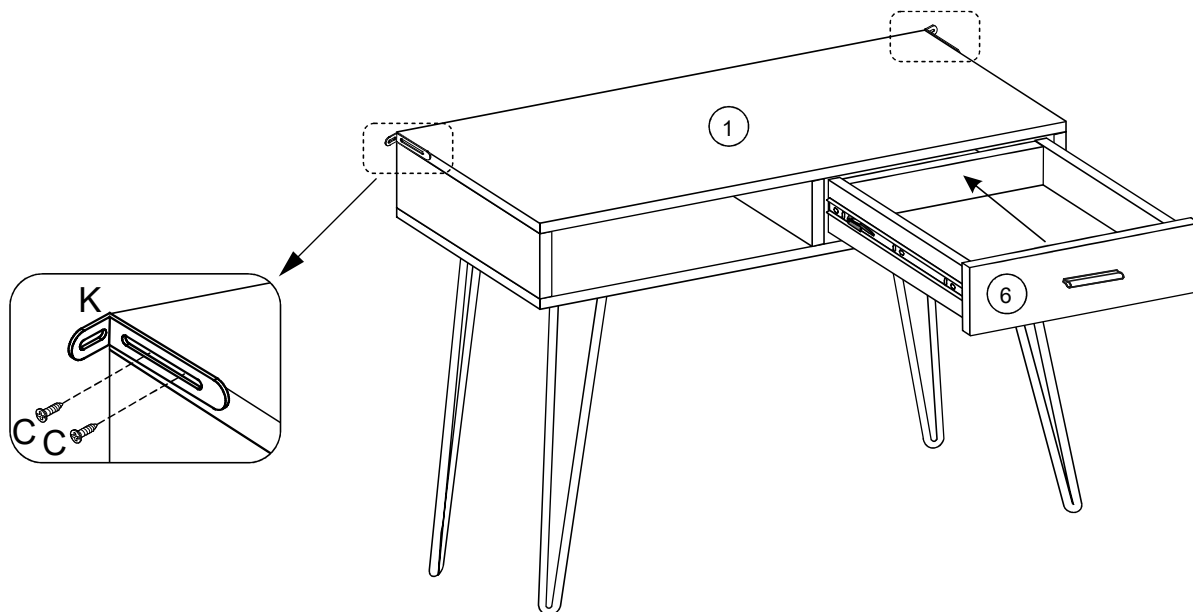
Assemble handle (G) to front drawer panel (6) using bolt (D), then insert bottom drawer panel as instruction showing. Assemble front drawer panel (6) to drawer left panel (7) and drawer right panel (8). Place sticker (L) to cover assembled bolt (A).

STEP 10



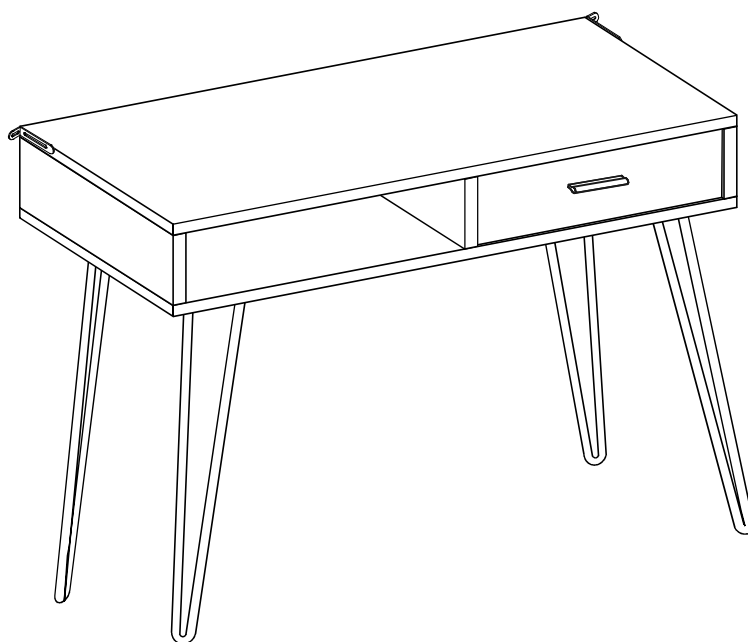
Assemble drawer runner (E2) to drawer left panel (7) and drawer right panel (8) using screw (C).

STEP 11



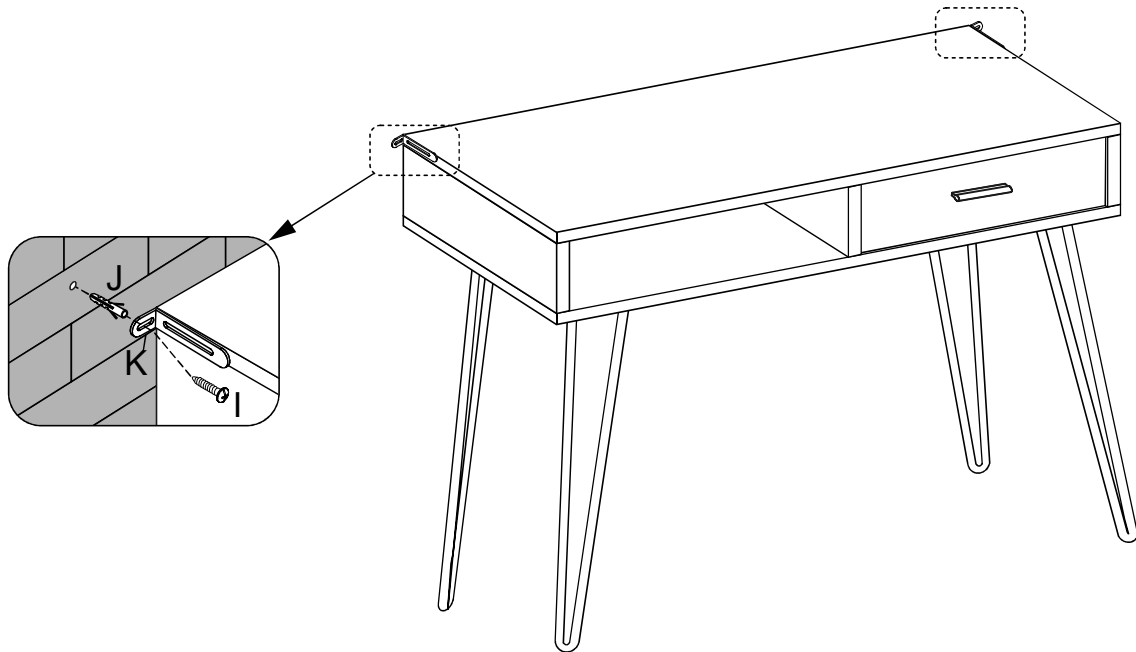
Insert drawer (6) then assemble metal (K) to top panel (1) using screw (C).

STEP 12



Assembly is complete.

STEP 13



Knock in wall nut (J) on the wall, then connect metal (K) and wall nut (J) using screw (I). Fix the desk to the wall.

GENERAL PRODUCT CARE



To protect your furniture, we suggest the following:

- Avoid placing your furniture in direct sunlight.
- Do not place furniture directly under windows.
- Do not place sharp materials (knife, fork, etc.) directly onto your furniture as sharp material may scrape and damage the finish.
- Do not place material with high temperature directly onto the surface of your furniture.
- Clean up spills quickly. Water left over a prolonged period of time may cause damage. Alcohol, perfume, nail polishes, aftershave and some medication may cause severe finish damage if not cleaned immediately.
- Use a clean, soft, dry, lint free absorbent cloth to clean your furniture. Do not use any detergent as they may contain ingredients that may react and damage the finish.

NOTE: If the above care advise is not adhered to your product warranty may become void